

# ESL STEEL TRAIL

DECEMBER 2023 | ISSUE 02 | PUBLISHED BY ESL CORPORATE COMMUNICATIONS

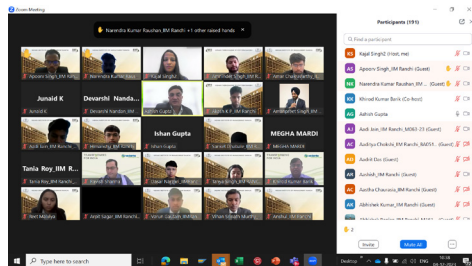
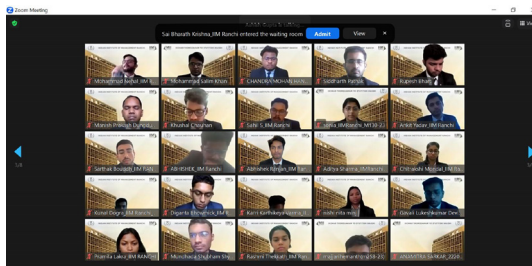
## CUSTOMER INTERACTIONS

## CAMPUS CONNECT

## CEO TOWNHALL HIGHLIGHTS

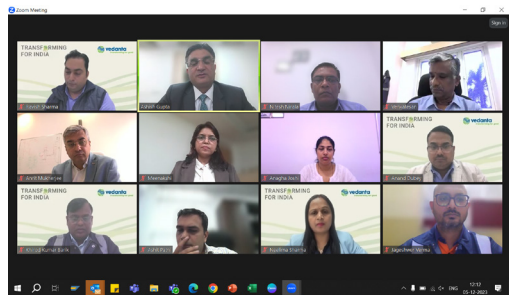
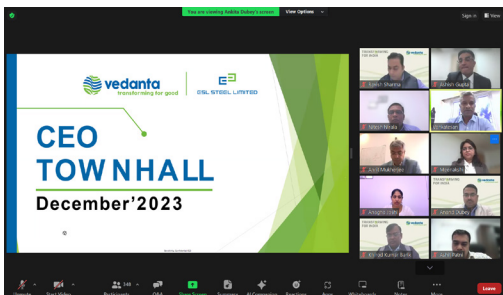


## MAHA MRITYUNJAYA JAAP & SHANTI PAATH HAWAN



## CAMPUS CONNECT WITH IIM RANCHI

## INTERACTING WITH BANSAL WIRES



## CEO TOWNHALL - DECEMBER 2023



## ESL Steel Ltd, partner NGO members visit Manav Seva Ashram

PNS : BOKARO

ESL Steel Limited, a Vedanta Group Company, is a leading integrated steel producer of India. In line with commitment to the community present in, ESL Steel Limited's CSR department and its partner implementing NGOs came together and decided to meet and spend time, on the occasion of the International Volunteers' Day, with the differently abled children at Manav Seva Ashram and share some happiness with them.

Manav Seva Ashram is an NGO situated in Sector 5, Bokaro, which helps in education and rehabilitation of differently abled and orphan children. They have looked after these special children in terms of their schooling, hostel and medical treatment for the last 20 years. The partner implementing NGOs which took part in this drive included AAS Vidyalaya, SEEDS



Impact, Citizens Foundation, Dristhee Foundation, Sarthak Sustainable Development Foundation and American India Foundation. Apart from meeting the children, the organisations together donated various items of need to them, including Dry Ration, Hygiene & Sanitation products, Eatables, Stationaries, Toiletries and other products of need to the students and residents for more than a couple of months' usage. Ashish Ranjan, Head, CSR, ER & PR, ESL Steel Limited says, "ESL Steel Limited and its partner NGOs have always shown unwavering commitment to seek out and uplift the underprivileged and marginalized individuals and ensure their inclusion in the mainstream. Through our dedicated efforts, we strive to empower each individual, fostering a sense of belonging and enabling them to play an essential role in the collective growth and prosperity of our community."



BRINGING JOY THROUGH THE IMPACTFUL COLLABORATION OF ESL CSR AND PARTNER NGOS